



# THOMPSON LANDRY GALLERY

RENTAL INFORMATION 2026



THOMPSON LANDRY  
GALLERY

The Events Department is available for consultation , please call or email to book a time  
[info@thompsonlandry.com](mailto:info@thompsonlandry.com) • 416-364-4955 •



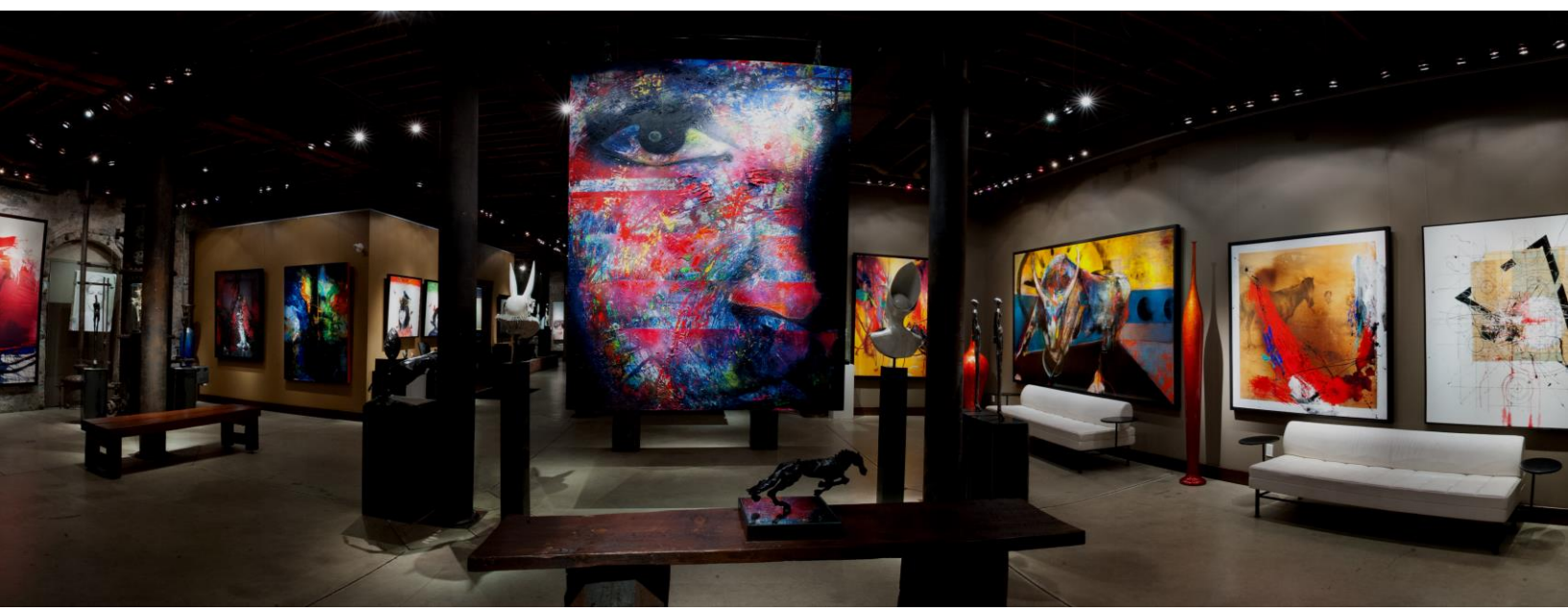
# STONE DISTILLERY GALLERY

32 DISTILLERY LANE

The Thompson Landry Gallery Stone Distillery Space is housed in a beautiful 2700 square foot space adorned with original distilling equipment and artwork. With its fourteen-foot limestone walls and unique architecture, the Stone Gallery is the perfect location for more intimate private celebrations and corporate gatherings.

Accenting the original distilling environment, our selection of contemporary and masters Québec artwork decorate the space in a vibrant and unique manner. Outfitted with a Bose-ambient sound system, the Gallery is ideal for any special occasion.

Venue rentals for our Stone Distillery Gallery include the option to incorporate a private art tour with a member of our curatorial team to educate, entertain, and impress your guests.







# RENTAL PACKAGES



## STONE DISTILLERY GALLERY - EVENING RENTAL

\$2,950.00

Rental Fee starting at 5pm until 1am (Including Set-Up)  
Guest Arrival at 7pm

## SPECIAL 3 HOUR CEREMONY RATE

\$1,750.00

### INCLUDES:

Administration  
Corkage Fee  
Gallery Supervision

### OPTIONAL ITEMS:

Central Artwork Removal - \$350.00  
Post event cleaning - \$200.00  
Early Closing Fee - \$500.00/hour





# RENTAL PACKAGES



## FULL DAY RENTAL

Rental Fee starting at 10am until 6pm (Including Set-Up)  
Guest Arrival at 12pm

### STONE DISTILLERY GALLERY

Weekdays: \$3400

Weekends: \$4000

#### INCLUDES:

Administration

Corkage Fee

Gallery Supervision

#### OPTIONAL ITEMS:

Central Artwork Removal (\$350.00) || Patio Use until 11pm (\$300.00) || Early Set Up Fee (\$500.00/hour)

## DAY AND EVENING RENTAL

Rental Fee starting at 10am until 1am (Including Set-Up)  
Guest Arrival at 12pm

### STONE DISTILLERY GALLERY

Weekdays: \$5400

Weekends: \$5800

#### INCLUDES:

Administration

Corkage Fee

Gallery Supervision

#### OPTIONAL ITEMS:

Central Artwork Removal (\$350.00) || Post e(\$300.00) || Early Set Up Fee (\$500.00/hour)

\*Please note that all above pricing does not include HST.





# EXCLUSIVE CATERING PARTNERS

To facilitate your event booking, we have hand selected some of the best caterers in the city to feature as our Exclusive Catering Partners. Each brings their own flair to your time with us and ensures the flawless culinary execution, staffing, and set-up of your event. In collaboration with our Events Department, your chosen caterer will rent all necessary furniture, dishware, and linens and arrange a floor plan based on your individual event needs.

The Thompson Landry Gallery and the Distillery District's preferred caterers are welcome in on site with the inclusion of the 15% landmark fee added to your total staffing and food.

\*Please note, should you wish to bring in an external caterer (pre-approved by the gallery) this fee is 20%.



**ProvisionsTO**  
647-654-2820

[info@provisionsto.com](mailto:info@provisionsto.com)  
[www.provisionsto.com](http://www.provisionsto.com)



**OLIVER & BONACINI**  
CATERING

**Oliver & Bonacini**  
416-364-1211

[catering@oliverbonacini.com](mailto:catering@oliverbonacini.com)  
[www.oliverbonacinievents.com](http://www.oliverbonacinievents.com)

**m<sup>c</sup>ewan** catering

**McEwan Catering**

416.444.6262 ext 243

Ann Stolte-Butler: Director of Catering

[ann@mcewancatering.com](mailto:ann@mcewancatering.com)  
<https://mcewancatering.com>



**Toben Food by Design**

647-344-8323

[email@tobenfoodbydesign.com](mailto:email@tobenfoodbydesign.com)  
[www.tobenfoodbydesign.com](http://www.tobenfoodbydesign.com)

# CATERING PARTNERS CONTINUED



## **Couture Cuisine**

416-449-5432

[yummy@couturecuisine.com](mailto:yummy@couturecuisine.com)

[www.couturecuisine.com](http://www.couturecuisine.com)



**Marigolds & Onions**  
CATERING & EVENT PRODUCTION

## **Marigolds and Onions Ltd.**

416-256-4882 ext. 263

[gmaxwell@marigoldsandonions.com](mailto:gmaxwell@marigoldsandonions.com)

[www.marigoldsandonions.com](http://www.marigoldsandonions.com)

**EAT  
ERT  
AIN  
M —  
ENT**

## **Eatertainment**

416-964-1162

[info@eatertainment.com](mailto:info@eatertainment.com)

[www.eatertainment.com/](http://www.eatertainment.com/)



**DANIEL *et* DANIEL**  
CATERING & EVENTS

## **Daniel et Daniel**

416-968-9275

[reception@danieletdaniel.ca](mailto:reception@danieletdaniel.ca)

[www.danieletdaniel.ca](http://www.danieletdaniel.ca)

**Corbin**  
Catering  
& Foods

## **Corbin Catering & Foods.**

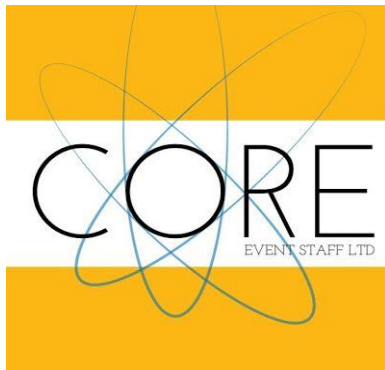
647-588-1116

[info@corbincateringandfoods.com](mailto:info@corbincateringandfoods.com)

[www.corbincateringandfoods.com/](http://www.corbincateringandfoods.com/)

# PREFERRED STAFFING COMPANIES

Your event deserves only the best when it comes to staffing. At the Thompson Landry Gallery, we work exclusively with three carefully selected companies to ensure our clients receive exceptional & consistent service. We require use of CORE Events Staffing Ltd, Formigas Staffing or DGS Event Staffing, unless these options are not available on the event date.



**CORE Event Staff Ltd.**

416-469-2673

[info@coreeventstaff.com](mailto:info@coreeventstaff.com)

[www.coreeventstaff.com](http://www.coreeventstaff.com)



**Formigas Staffing**

416-536-9730

[ana.pontes@formigas.ca](mailto:ana.pontes@formigas.ca)

[www.formigas.ca](http://www.formigas.ca)



**DGS Event Staffing Agency**

416-270-2292

[reception@dgsevents.com](mailto:reception@dgsevents.com)

[www.dgsevents.com](http://www.dgsevents.com)



## THOMPSON LANDRY GALLERY

### ART EXPERT FOR YOUR EVENT

Opened in March of 2006, the Thompson Landry Gallery is one of the landmark tenants of the arts community at the Historic Distillery District. Pioneering new ground for galleries in Toronto, the Thompson Landry Gallery showcases both the very best of the new generation of Québécois contemporary artists, as well as the great masters of Québec.

Enhance your event at the Thompson Landry Gallery by having one of our knowledgeable Art Experts onsite to guide your guests through the space and engage them with the incredible pieces of art that fill our walls. This unique add-on is sure to make your next event an unforgettable one.

Our Art Experts may be booked for the first hour or two of your event as a means of introducing your guests to the space and the artwork that surrounds them. The basic fee for this service is \$150.00 +HST per hour.







## VENUE CAPACITY

- 40 Formal Seated Dinner
- 70 Standing Cocktail Reception
- 100 Conference Style Seating

## RENTAL POLICIES:

### CONTRACTS

- Minimum length of rental is 3 hours
- Holds will be finalized upon signing of the Venue Rental Schedule and Contract, and payment of the deposit (no non-refundable 50% of total amount owing)
- All contracts must be signed and finalized by both parties prior to event entry

### INSURANCE AND SECURITY

- Security is required for events serving alcohol (1 guard per 100 guests or per entrance being used)
- All events require proof of insurance (mandatory two million dollars of coverage)

### ARTWORK

- Removal of the central artwork must be confirmed prior to the event date
- Additional fees may be applicable for the removal or relocation of any additional artwork (to be determined prior to event date)
- Post-event inspection of all artworks must be completed by Gallery Representative, should discrepancies be found, the client will be liable

### A/V AND SOUND SUPPLIERS

The 194 Group  
 Shez Mahra (905)599-9091  
[info@the194group.com](mailto:info@the194group.com)  
[www.the194group.com/tlg](http://www.the194group.com/tlg)

### DJS

DJ Floh Back Productions  
[danny@flohback.com](mailto:danny@flohback.com)

DJiZM Entertainment Group  
 647-272-9184 || [info@djizm.org](mailto:info@djizm.org)

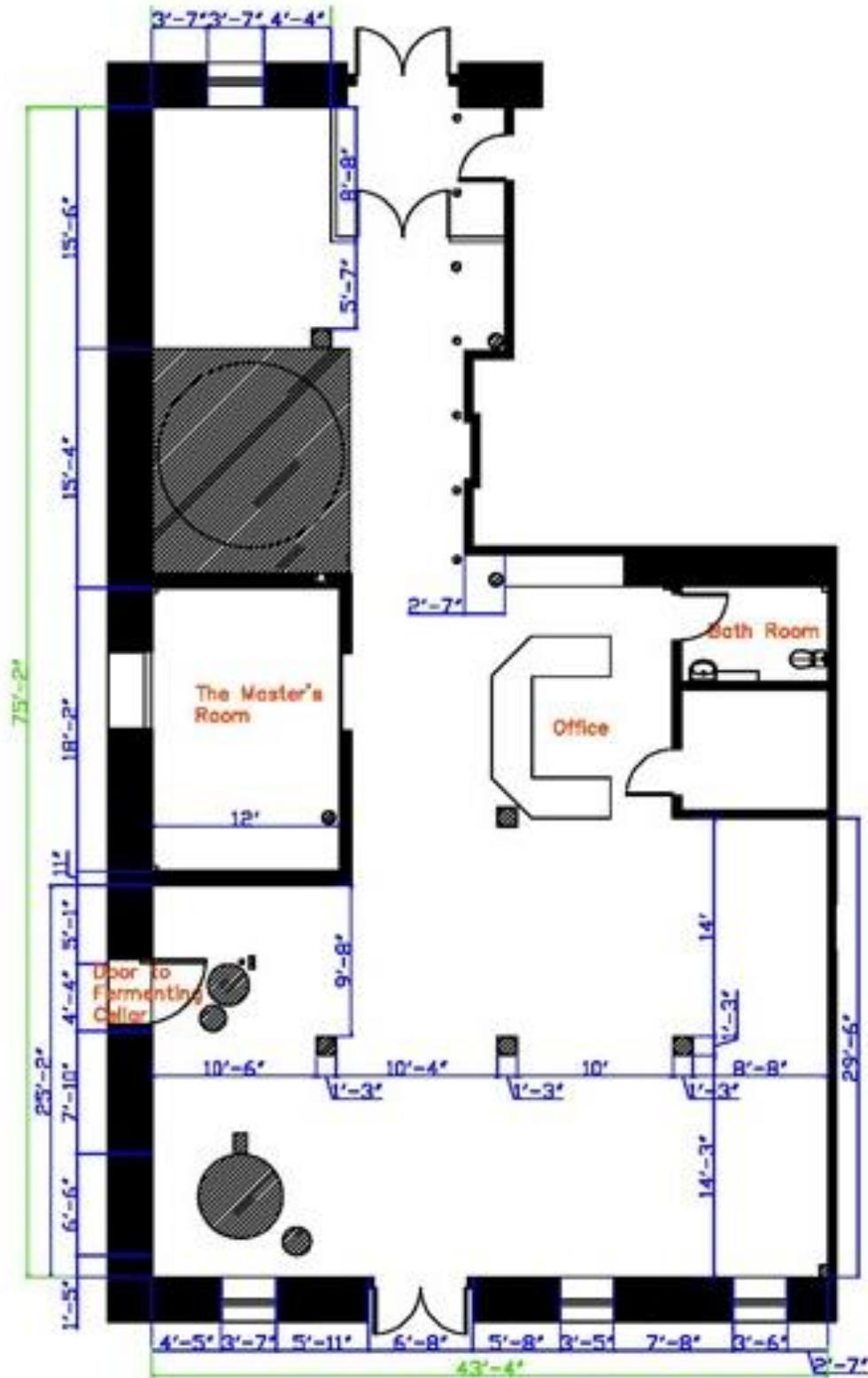
### FOOD AND DRINK

- All deliveries must be made on the day of the event at the agreed upon times with no alcohol or personal belongings can be left on site before or after contracted hours
- On-site alcohol must be accompanied by a Special Occasion Permit supplied by either the client (if corkage has been paid) or the caterer
- A 15% landmark fee will be applied to your catering bill on food, staffing, and non-alcoholic beverages (please note for non-preferred caterers this fee will be 20%)
- External caterers are welcome on site upon preapproval of the gallery and signing of the Gallery's Space Use Guidelines and Kitchen Use Agreement



THOMPSON LANDRY  
GALLERY

# STONE DISTILERY GALLERY



Stone Gallery 2 3/4" : 1'0"